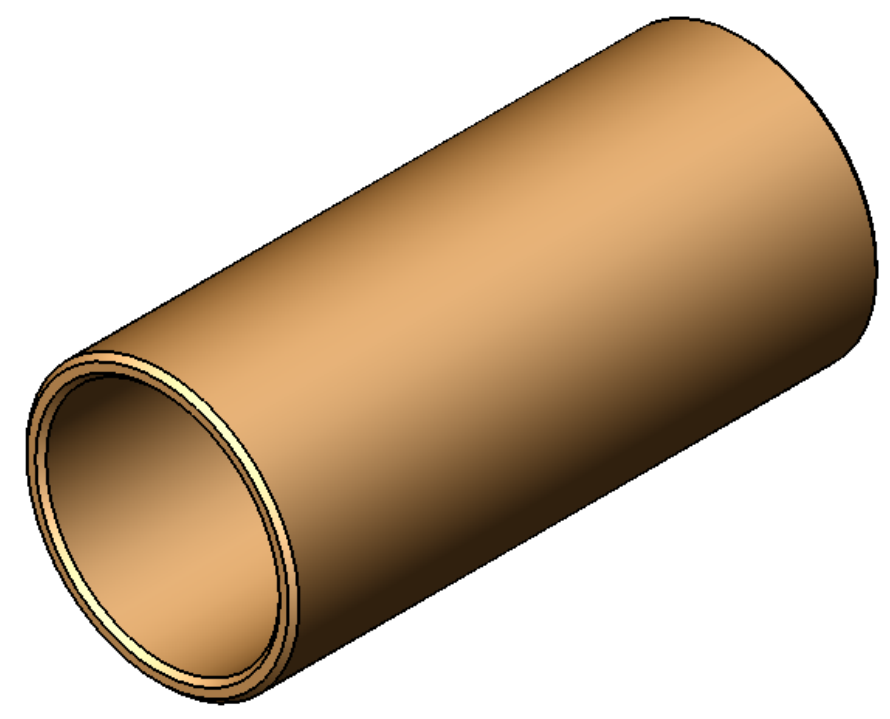
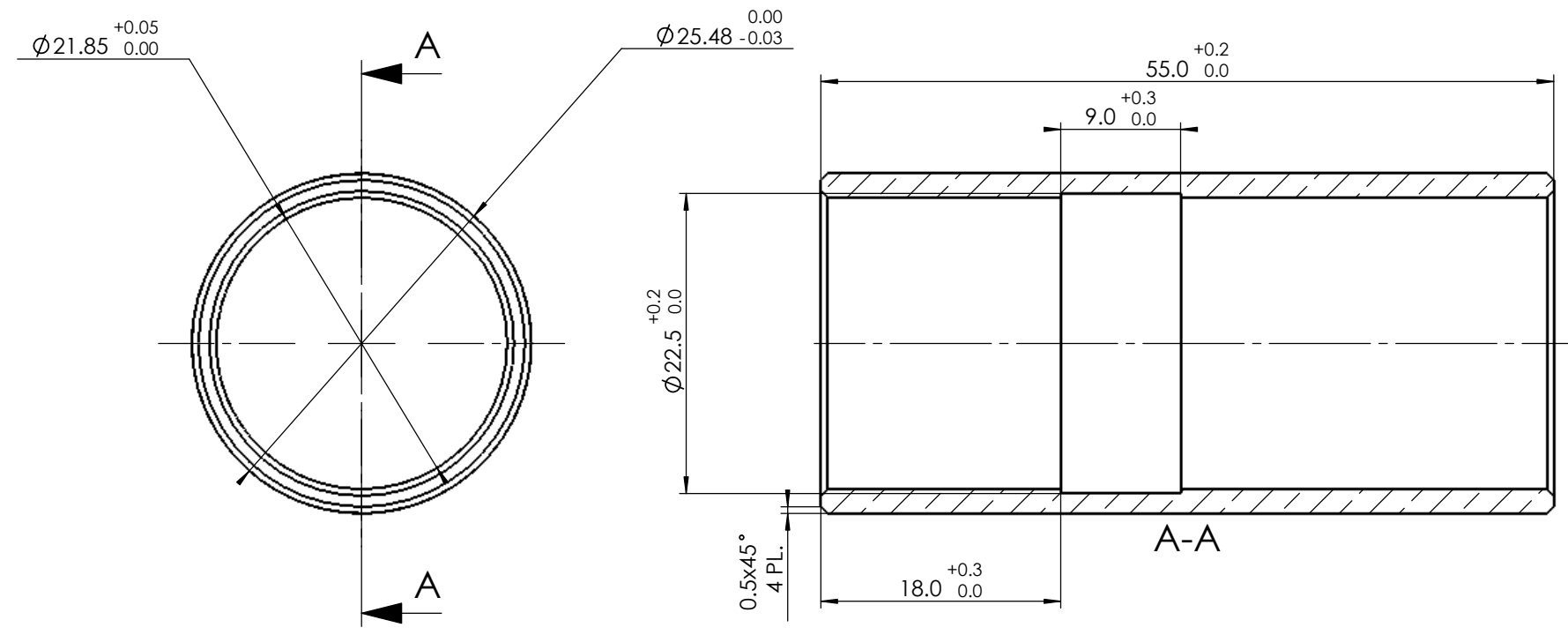


REV	ECO No	DESCRIPTION	DRAWN	APPROVED	DATE
-	-	-	-	-	-
-	-	-	-	-	-



3	-	-
2	-	-
1	-	-

MATERIAL: BRASS PER QQ-B-626 ALLOY 360 1/2 HARD		UNLESS OTHERWISE SPECIFIED: MACHINING REQUIREMENTS BREAK SHARP CORNERS AND EDGES 0.2 MAX FILLET RADIUS 0.4 MAX C SINK INT. THREADS 90° TO MAJOR DIA CHAMFER EXT. THREADS 45° TO MAJOR DIA		TITLE: PINION SLEEVE BUSHING
FINISH: 1		GENERAL TOLERANCES:		
SURFACE ROUGH.		0 - 30 ± 0.2 30 - 500 ± 0.3 500 - 1000 ± 0.5 1000 + ± 1	ANGLES $\pm 0.5^\circ$ HOLES 0 - 10 $+0.2 / -0.05$ HOLES 10+ GEN. TOL BETWEEN HOLES ± 0.05	DWG No. 66-3156 SCALE 2:1 SHEET 1 OF 1 REV 0 SIZE A3
1		UNLESS OTHERWISE SPECIFIED: ALL DIMENSIONS IN MM & INCLUDE CHEM. APPLIED/PLATED FINISH. DO NOT SCALE DRAWING.		
DESIGNED -- --/--/---		PROJECT -		
DRAWN -- --/--/---		NEXT ASSY		
CHECKED -- --/--/---		PROJECT -		
APPROVED -- --/--/---		PROJECT -		